



Installation Guide

Models covered

3800C

4100C

4500C

5000C

6000C



MADE IN BRITAIN, **SPINNING** ALL OVER THE WORLD



Contents

Safety first	3
Models Covered by this manual	3
Groundworks	4
Assemble turntable on to an oversize base	4
Assemble turntable in to a circular pit	4
Ensure the turntable base is flat	4
Ensure that the finished base is firm	4
Groundworks for a manual turntable	4
Groundworks for a motorised turntable	4
The maximum slope for a motorised installation	4
Car turntable assembly	5
Step 1 - Position central bearing, motor housing & two spiders	5
Step 2 - Position other outer rim and spider parts	5
Step 3 - Set and fix outer rim joints	6
Step 4 - Set outer rim radius and lock spiders	6
Step 5 - Fix down centre bearing and build up	7
Step 6 - Loosely assemble top running track	7
Step 7 - Place frames into position	8
Step 8 - Fit top plates	9
Wiring of drive system	10
Scheduled maintenance	10

The owner of the turntable must ensure that the safety devices provided are kept in good order.

Operators must have read and understood the instructions and safety precautions contained in this document before being permitted to use the turntable.

Any recommended maintenance regime suggested by this manual must be put into place by the owner.

Under no circumstances may protection devices be overridden, removed, or interfered with in any way during the normal production process.

Guards or protection devices removed or overridden for maintenance, setting, or other essential work, should only be done with electrical power isolated from the turntable. Safety devices must be replaced before bringing the turntable back into operation. Under no circumstances should the turntable be run with any safety features removed.

It is essential that only cars that are within dimension and weight specifications be used on this turntable.

Repairs and modifications carried out by the owner, or third party on the owners behalf, not specifically authorised by manufacturer, will be the sole responsibility of the owner who will take responsibility for any related rectification and damage issues.

Do not operate the turntable if either the control cabinet or the motor housing are exposed.



These areas have live electrics and hazardous moving parts that can cause harm

Models covered by this manual

This installation manual covers the 3800c, 4100C, 4500C, 5000C & 6000C variants of Spin-It Car Turntables.

Both motorised and manual options are covered in this manual.

Ensure the turntable base is flat

Any un-evenness in the finished surface will result in the turntable running uneven.

Ensure that the finished base is firm

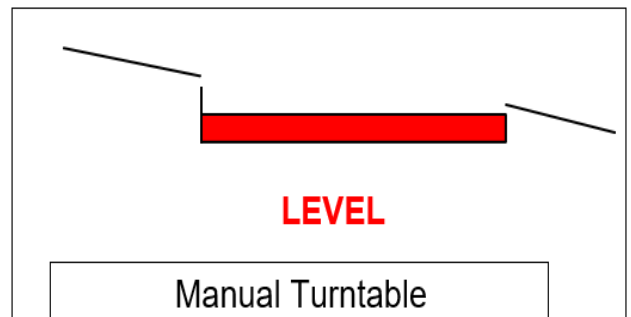
Any settlement in the groundwork will result in the table moving down and may cause aesthetic or even mechanical faults to occur. A concrete base is preferred.

Groundwork's for a Manual Turntable

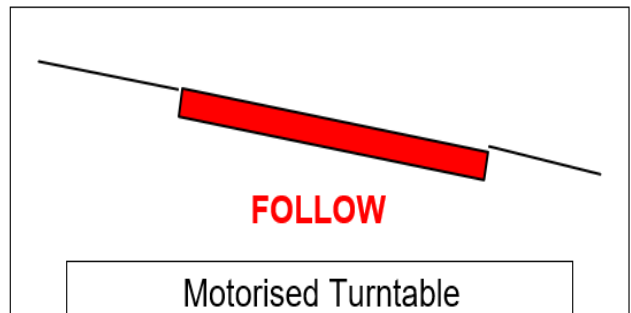
Note that for a manual turntable there is NO NEED to excavate the hole to fit a motor housing. Also note that for a manual turntable there is no motor acting as a break.

It is important to fit the MANUAL turntable TO A LEVEL

If there is any incline in the way a manual turntable is fitted there is a chance that a pendulum effect could occur with the heavy end of a car swinging downhill un-attended. **This must be avoided.**

**Groundwork's for a Motorised Turntable**

The breaking effect that is provided by the motor in a motorised turntable means that a motorised turntable CAN BE FITTED at an incline. This gives the option of following the level of the surrounding ground and avoiding having to blend a level turntable into a sloping area.

**The Maximum slope for a motorised installation**

The maximum recommended slop for a turntable installation is 3.5 degrees (1 in 16) This equates to a physical slope of 60mm per meter.



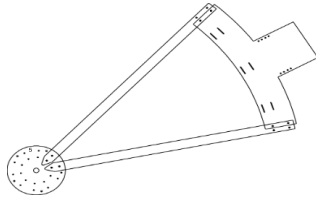
Example of an installation fitted on to an oversize base



Example of an installation fitted into a cast circular pit

Step 1

Position central bearing, motor housing and two spiders



SPLIT the centre bearing and only position the **BOTTOM** in position



Ensure the motor housing section is in the correct position for the finished drive system

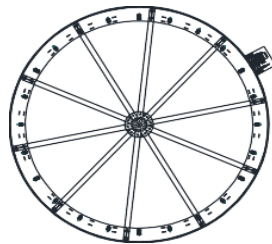


Ensure the turntable centre bearing is in the correct position for the turntable centre

Step 2

Position other outer rim & spider parts

At this stage **DO NOT** use any tools to tighten up any bolting sets.



Loosely fix fasteners by hand



Once loosely assembled, place rubber shims under the bottom running track beneath each wheel

Step 3

Set and fix outer rim joints



Fit brackets to the Outer rim as shown above.

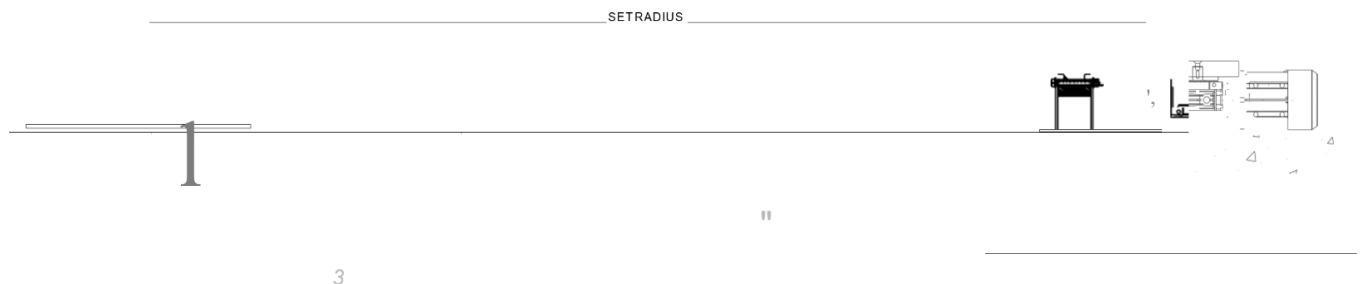


Lift and level the stainless-steel sections to give good joints and tighten fasteners

Step 4

Set outer rim radius and lock spiders

Check the distance from the centre bearing spindle to the inside of the outer rim **for consistency**.



Making sure you have a true circle at this stage will ensure an even gap between the turntable disc and the stainless-steel rim

Step 5

Fix down centre bearing and build up



Fix down the Centre bearing base to the concrete slab



Build up the centre bearing.

- Make sure to fill the spindle void with grease.
- Make sure NOT to over tighten the bearings.
- Make sure to fit a split pin once assembled.

Step 6

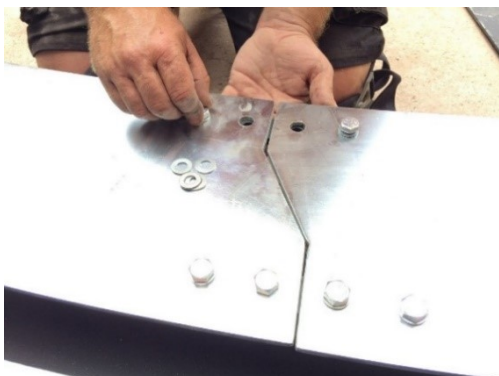
Loosely assemble top running track



Place Running Track sections on top of wheels.

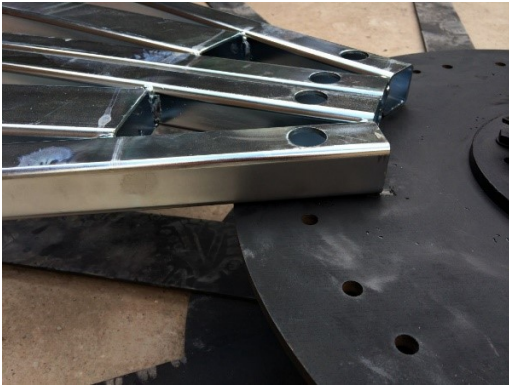


Fix together using brackets provided.
NOTE – the strap on the bottom face of the track.

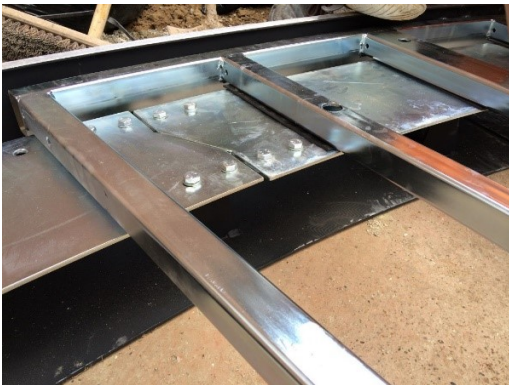


Step 7

Place frames in to position



Place frames **ONE AT A TIME** over the centre bearing and the running track.

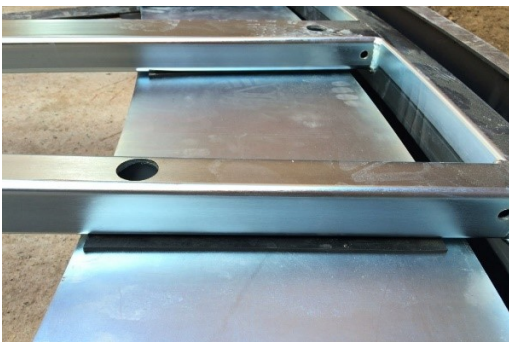


Lock the frames together using the tabs welded on to the underside of each frame.

Make sure to fit rubber shims between the frames and the running track

HINT - Fit M10 bolting sets to each frame as you go, do not leave it all to the end.

HINT - Use the frame with **NO TABS** as the **LAST** one to fit. Do not miss out the M10 x 110 frame to frame bolts.



Once all parts have been loosely assembled, check that the gap between the outer rim and the turntable frames is consistent then tighten up **ALL** bolts.



Step 8

Fit top plates



Place top plates on to frames **ONE AT A TIME** maintaining a 10mm gap to the outer rim.

Place the centre disc in to position to give a good guide to work to.

Make sure to place the outer edges of the top plates on the 80mm wide central span of a frame and **NOT** on a frame to frame joint.

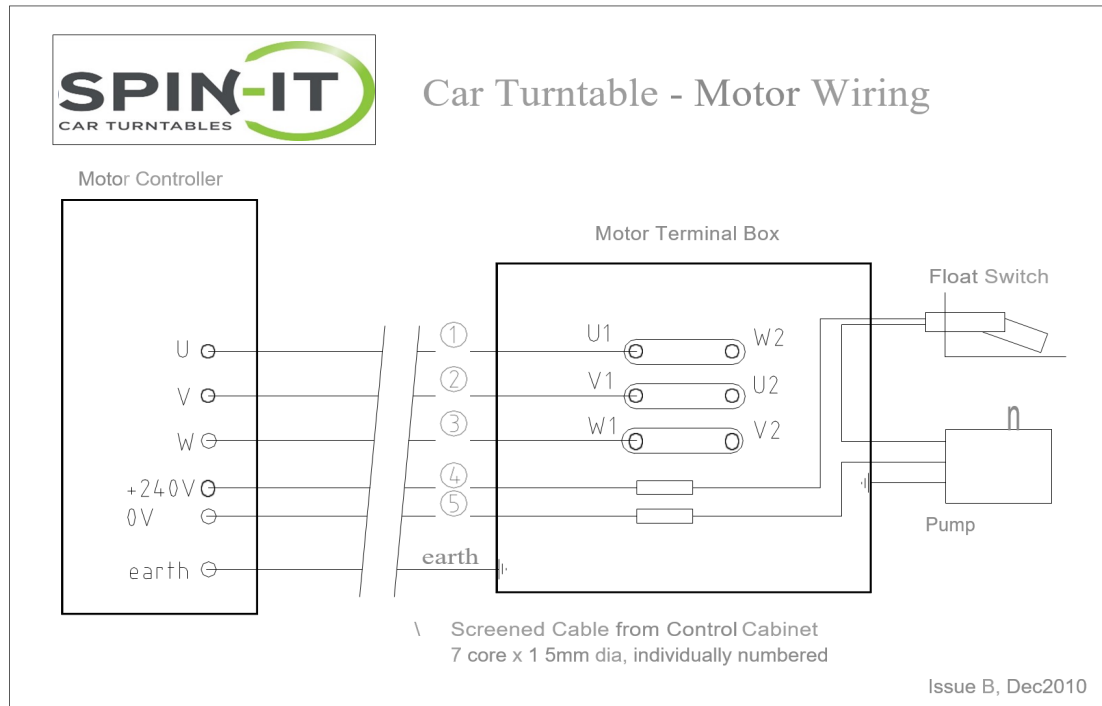


Drill through fixing holes and fasten down once in correct position.

Follow the schematic wiring diagram below.

ENSURE that all earth points are properly connected.

The Sump Pump and float switch are an optional extra and will NOT normally be fitted.



Scheduled Maintenance

Regularly check the following:

- That the turntable is clean and that all debris etc. is not fouling the safe turning of the turntable
- That the electrical supply connection is in good safe order.
- That the electrical earth trip (RCD) facility fitted to the supply ring is in good working order.
- That there are no loose screws on the aluminium top plates.

www.spin-it.co.uk

sales@spin-it.co.uk

0800 612 8830



MIDLANDS OFFICE
Unit 1, Brabazon Court
Borman
Lichfield Road Ind Est
Tamworth, Staffs
B79 7TA